



Airborne Geophysical Survey Report Strike Property

Prepared for: Network Exploration Ltd.
November 30, 2009



Precision GeoSurveys Inc.
520-355 Burrard Street, Vancouver, Canada V6C 2G8
www.precisiongeosurveys.com

Table of Contents

1.0	Introduction.....	3
2.0	Geophysical Data.....	4
2.1	Magnetic Data.....	4
2.2	Radiometric Data.....	5
3.0	Survey Operations.....	5
4.0	Equipment.....	6
4.1	AGIS.....	6
4.2	Spectrometer.....	7
4.3	Magnetometer.....	7
5.0	Data Processing.....	8
5.1	Magnetic Processing.....	8
5.2	Radiometric Processing.....	8
5.3	Final Data Format.....	9
	Appendix A: Maps.....	10

1.0 Introduction:

This report outlines the survey operations and data processing actions taken during the airborne geophysical survey flown over the Strike Property. The airborne geophysical survey was flown by Precision GeoSurveys Inc. for Network Exploration Ltd. The geophysical survey, carried out on October 24 and October 25, 2009, saw the acquisition of gamma ray spectrometer data and magnetic data.



Figure 1: Survey lines outlined in red

The Strike property (Figure 1) is located south of the Stewart River and approximately 190 km north-west of Carmacks, YT (Figure 2). The survey area itself is approximately 4.7 km by 1.3 km. A total of 56.4 line kilometers of radiometric and magnetic data were flown for this survey, this total includes tie lines and survey lines. The survey lines were flown at 100 meter spacing's at a 90°/270° heading; the tie lines were flown at 1 km spacing's at a heading of 0°/180°.

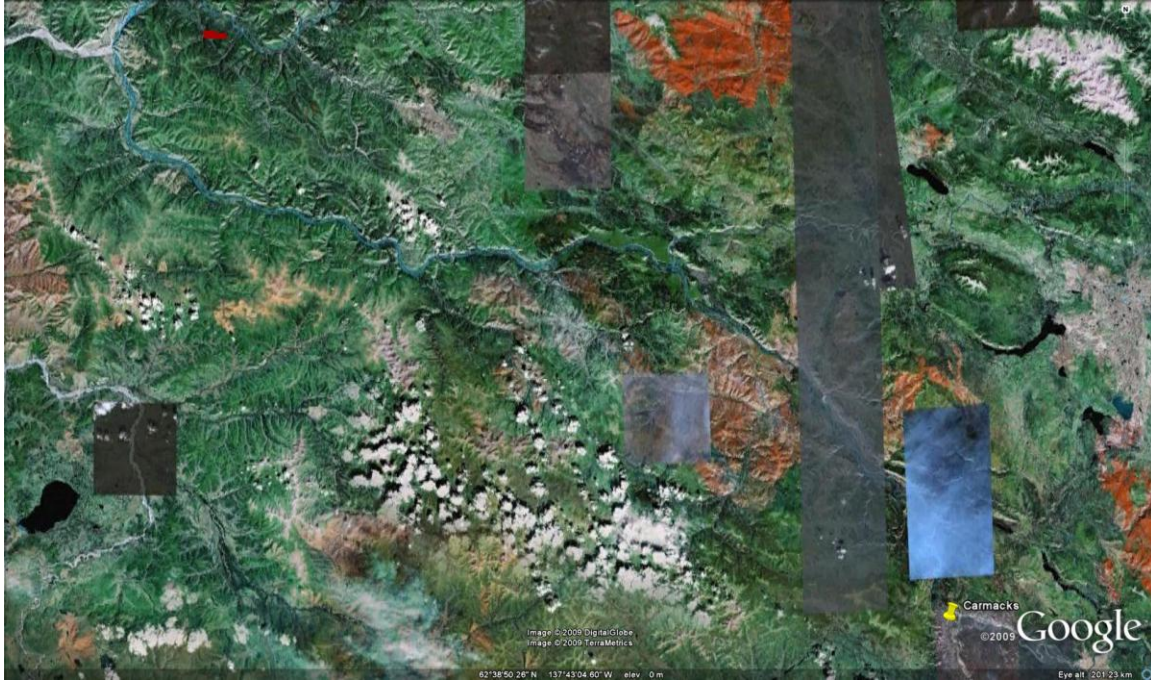


Figure 2: Strike survey area location relative to Carmacks, YT.

2.0 Geophysical Data:

Geophysical data are collected in a variety of ways and are used to aid in the exploration and determination of geology, mineral deposits, oil and gas deposits, contaminated land sites and UXO detection.

For the purposes of this survey, airborne gamma ray spectrometer and magnetic data were collected to serve in the exploration of the Strike property. This property is part of the White Gold area play which is host to intrusion related gold mineralization.

2.1 Magnetic Data:

Magnetic surveying is probably the most common airborne survey type to be conducted for both mineral and hydrocarbon exploration. The type of survey specifications, instrumentation, and interpretation procedures, depend on the objectives of the survey. Typically magnetic surveys are performed for:

1. Geological Mapping to aid in mapping lithology, structure and alteration in both hard rock environments and for mapping basement lithology, structure and alteration in sedimentary basins or for regional tectonic studies.
2. Depth to Basement mapping for exploration in sedimentary basins or mineralization associated with the basement surface.

2.2 Radiometric Data:

Radiometric surveys detect and map natural radioactive emanations, called gamma rays, from rocks and soils. All detectable gamma radiation from earth materials come from the natural decay products of three primary elements, uranium, thorium, and potassium. The purpose of radiometric surveys is to determine either the absolute or relative amounts of U, Th., and K in surface rocks and soils.

3.0 Survey Operations:

Precision GeoSurveys flew the Strike property using a Bell 206 BIII Jet Ranger (Figure 3). The survey lines were flown at a nominal line spacing of one hundred (100) meters and the tie lines were flown at 1 km spacing for both the spectrometer and magnetometer as they were acquired simultaneously. The average survey elevation was 45.2 meters vertically above ground. The experience of the pilot helped to ensure that the data quality objectives were met and that the safety of the flight crew was never compromised given the potential risks involved in airborne surveying.



Figure 3: Bell 206 Jet Ranger equipped with mag stinger for magnetic data acquisition.

The base of operations for this survey was 192 km away in Carmacks, YT. The Precision crew consisted of a total of two members:

Harmen Keyser - Pilot

Chris Brown – Geophysicist/operator

The first day of survey took place on October 24 and October 25, 2009. The survey was completed without any equipment issues, but the crew did experience some inclement weather and were unable to fly full days.

4.0 Equipment:

For this survey a magnetometer, spectrometer and a data acquisition system were required to carry out the survey and collect quality, high resolution data.

4.1 AGIS:

The Airborne Geophysical Information System, AGIS, (Figure 4), is the main computer used in data recording, data synchronizing, displaying real-time data for the operator to QC, pilot navigation and pilot display information.



Figure 4: AGIS installed in the Bell 206.

The AGIS was manufactured by Pico Envirotec; therefore the system uses standardized Pico software and external sources are connected to the system via RS-232 serial communication cables. The AGIS data format is easily converted into Geosoft or ASCII file formats by a supplied conversion program called PEIView. Additional Pico software allows for post survey quality control procedures.

4.2 Spectrometer:

The IRIS, or Integrated Radiometric Information System is a fully integrated, gamma radiation detection system containing two downward facing NaI detecting crystals for a total volume of 8.4 litres (figure 5). Real time data acquisition, navigation and communication tasks are integrated into a single unit that is installed in the rear of the aircraft as indicated below. Information such as total count, counts of various elements (K, U, Th, etc.), temperature, barometric pressure, atmospheric humidity and survey altitude can all be monitored on the AGIS screen for immediate QC. All the radiometric data are recorded at 1 Hz.



Figure 5: IRIS strapped into the cargo box of the helicopter.

4.3 Magnetometer:

The magnetometer used by Precision GeoSurveys is a Scintrex cesium vapor CS-3 magnetometer. The system was housed in a front mounted “stinger” (Figure 6). The CS-3 is a high sensitivity/low noise magnetometer with automatic hemisphere switching and a wide voltage range, the static noise rating for the unit is +/- 0.01 nT. On the AGIS screen the operator can view the raw magnetic response, the magnetic fourth difference and the survey altitude for immediate QC of the magnetic data. The magnetic data are recorded at 10 Hz. A magnetic compensator is also used to remove noise created by the movement of the helicopter as it pitches, rolls and yaws within the Earth’s geomagnetic field.



Figure 6: View of the mag stinger.

5.0 Data Processing:

After all the data are collected after a survey flight several procedures are undertaken to ensure that the data meet a high standard of quality. All data were processed using Pico Envirotec software and Geosoft Oasis Montaj geophysical processing software.

5.1 Magnetic Processing:

During aeromagnetic surveying noise is introduced to the magnetic data by the aircraft itself, movement in the aircraft (roll, pitch and yaw) and the permanent magnetization of the aircraft parts (engine and other ferric objects) are large contributing factors to this noise. To remove this noise a process called magnetic compensation is implemented. The magnetic compensation process starts with a test flight at the beginning of the survey where the aircraft flies in the four orthogonal headings required for the survey ($50^{\circ}/230^{\circ}$ and $140^{\circ}/320^{\circ}$ in the case of this survey) at an elevation where there is no ground effect in the magnetic data. In each heading roll, pitch and yaw maneuvers are performed by the pilot, these maneuvers provide the data that is required to calculate the necessary parameters for compensating the magnetic data. A computer program called PEIComp is used to create a model for each survey to remove the noise induced by aircraft movement; this model is applied to each survey flight so the data can be further processed.

A magnetic base station is set up before every flight to ensure that diurnal activity is recorded during the survey flights. Precision GeoSurveys uses a Geometrics 858 base station and sampled at 0.1Hz. Base station readings were reviewed at regular intervals to insure that no data were collected during periods with high diurnal activity (greater than 5 nT per minute). The base station was installed at a magnetically noise-free area, away from metallic items such as steel objects, vehicles, or power lines. The magnetic variations recorded from the stationary base station are removed from the magnetic data recorded in flight to ensure that the anomalies seen are real and not due to solar activity.

Some filtering of the magnetic data is also required. A Non Linear filter was used for spike removal. The 1D Non-Linear Filter is ideal for removing very short wavelength, but high amplitude features from data. It is often thought of as a noise spike-rejection filter, but it can also be effective for removing short wavelength geological features, such as signals from surficial features. The 1D Non-Linear Filter is used to locate and remove data that are recognized as noise. The algorithm is 'non- linear' because it looks at each data point and decides if that datum is noise or a valid signal. If the point is noise, it is simply removed and replaced by an estimate based on surrounding data points. Parts of the data that are not considered noise are not modified. The combination of a Non-Linear filter for noise removal and a low pass trend enhancement filter resulted in level data as indicated in the results section of this report. The low pass filters simply smoothes out the magnetic profile to remove isolated noise.

A lag correction was applied to the total magnetic field data to compensate for the lag in the recording system as the magnetometer sensor flies 6.45 m ahead of the GPS antenna.

Following a lag correction of 1.7 seconds, a low-pass filter equivalent to 1 second was then applied to the lag corrected data.

5.2 Radiometric Processing:

Radiometric data are processed by windowing the full spectrum to create channels for U, K, Th and total count. The data are then lightly filtered and corrected for survey altitude at standard temperature and pressure. Background radioactive contributions from the aircraft, cosmic radiation and atmospheric radon must also be removed. Finally the data are corrected by removing spectral overlap; this is done using the striping ratios that have been calculated for the spectrometer by prior calibration, this breaks the corrected elemental values down to the apparent radioelement concentrations.

5.3 Final Data Format

X – Easting in NAD83, UTM zone 7N
Y – Northing in NAD83, UTM zone 7N
utctime – UTCtime
basemag – diurnal data
mag – total magnetic field
lalt – laser altimeter readings
tc_cor – corrected total count
eK – percent potassium
eU – equivalent uranium
eTh – equivalent thorium

The file format will be provided in two (2) formats, the first will be a .GDB file for use in Geosoft Oasis Montaj, the second format will be a .XYZ file, this is text file. Two separate files will be provided for each format, one for the magnetic and one for the radiometrics.

Appendix A Maps

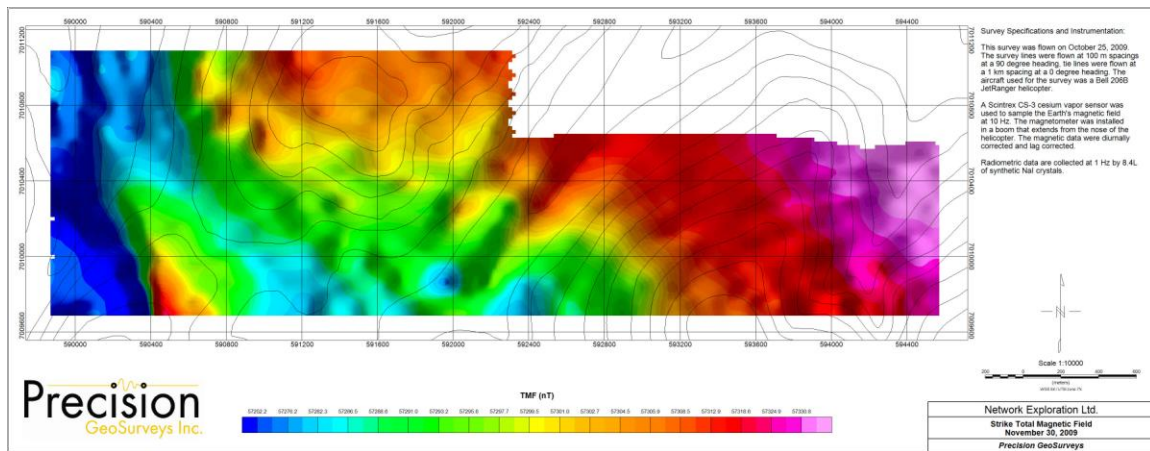
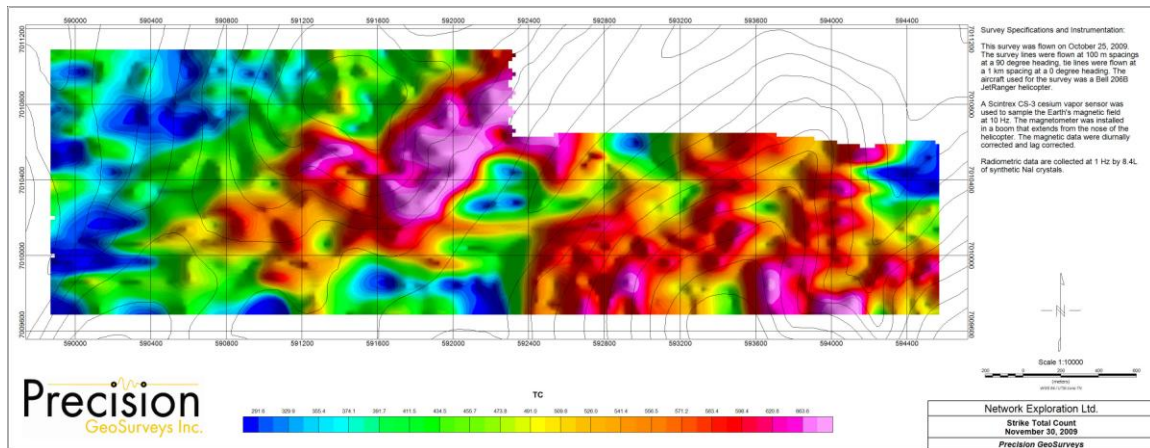


Figure 1: Strike total magnetic field.



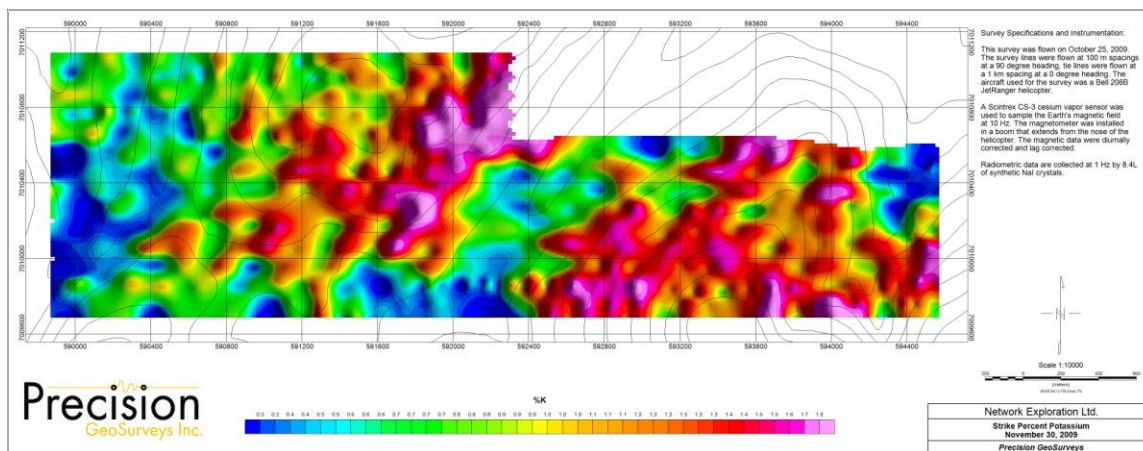


Figure 3: Strike percent potassium

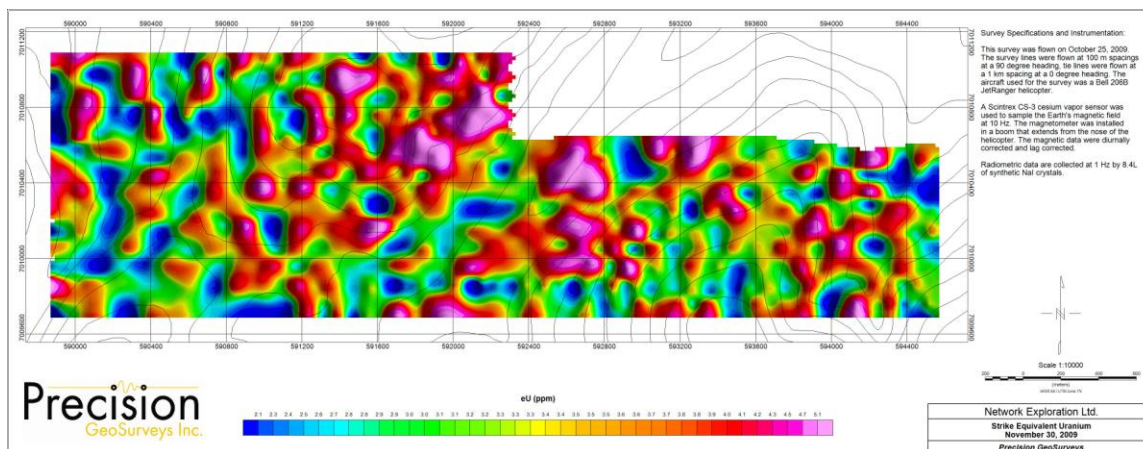


Figure 4: Strike equivalent uranium

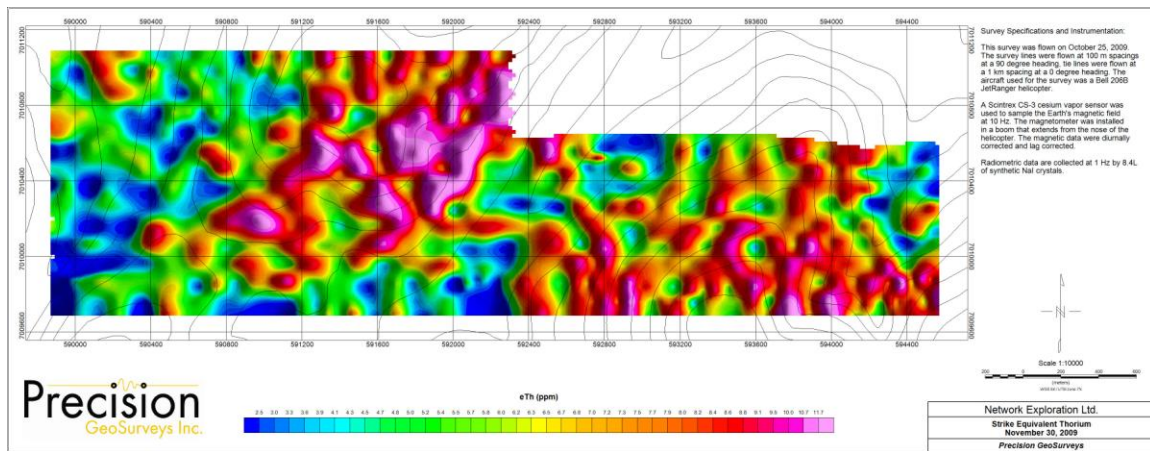


Figure 5: Strike equivalent thorium